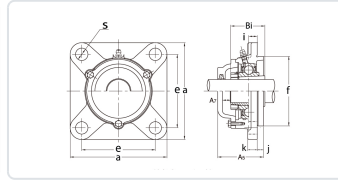
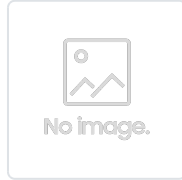


17. ลูกปืนตุ้กตา > 17.5 ลูกปืนตุ้กตาแบบหน้าแปลนกลม > 17.5.9 CUKFS รุ่นฝาครอบกันฝุ่นแบบเหล็กหล่อ มีสลีฟ > 17.5.9.2 CUKFS...CE ฝาตะลุด้านเดียว



Product Name	Principal Dimensions										
	d	a	e	s	k	i	j	f	Bi	A5	A7
	mm	mm	mm	mm	mm	mm	mm	mm	mm	mm	mm
CUKFS305CE+H2305	25	110	80	16	13	9	7	80	35	55	12
CUKFS306CE+H2306	30	125	95	16	15	10	8	90	38	60	13
CUKFS307CE+H2307	35	135	100	19	16	11	9	100	43	65	14
CUKFS308CE+H2308	40	150	112	19	17	13	10	115	46	73	17
CUKFS309CE+H2309	45	160	125	19	18	14	11	125	50	78	17
CUKFS310CE+H2310	50	175	132	23	19	16	12	140	55	85	19
CUKFS311CE+H2311	55	185	140	23	20	17	13	150	59	90	20
CUKFS312CE+H2312	60	195	150	23	22	19	14	160	62	98	23
CUKFS313CE+H2313	65	208	166	23	22	15	18	175	65	103	24
CUKFS315CE+H2315	75	236	184	25	25	21	18	200	73	114	25
CUKFS316CE+H2316	80	250	196	31	27	18	20	210	78	115	23
CUKFS317CE+H2317	85	260	204	31	27	24	20	220	82	126	26
CUKFS318CE+H2318	90	280	216	35	30	24	20	240	86	128	26
CUKFS319CE+H2319	95	290	228	35	30	39	20	250	90	149	30
CUKFS320CE+H2320	100	310	242	38	32	39	20	260	97	154	31
CUKFS322CE+H2322	110	340	266	41	35	35	25	300	105	165	36
CUKFS324CE+H2324	120	370	290	41	40	35	30	330	112	175	35
CUKFS326CE+H2326	130	410	320	41	45	35	30	360	121	180	36
CUKFS328CE+H2328	140	450	350	41	55	45	30	400	131	195	37